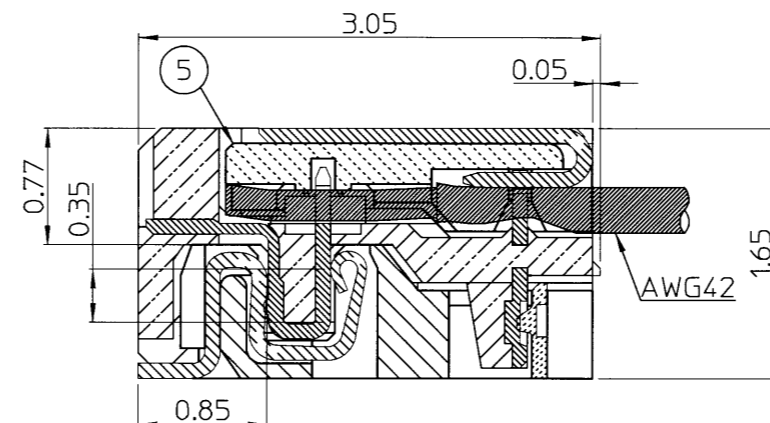
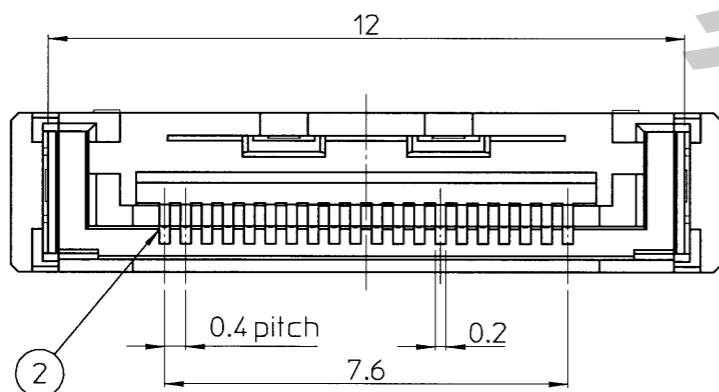
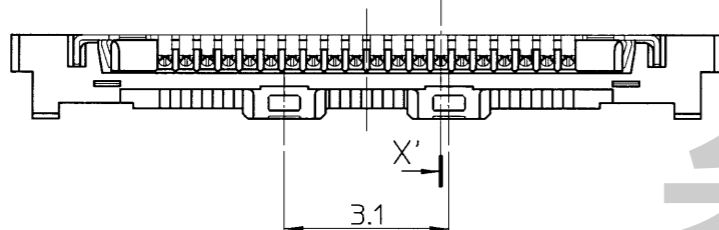
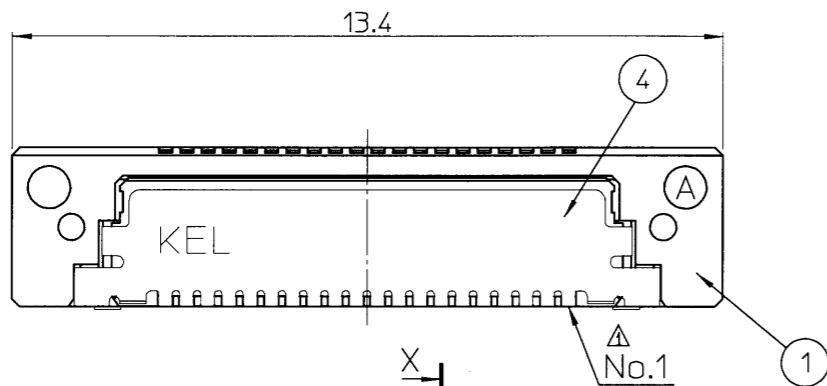
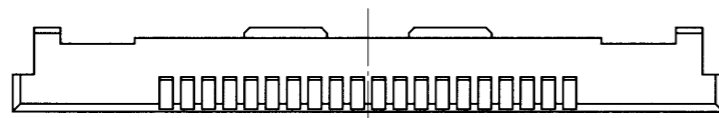
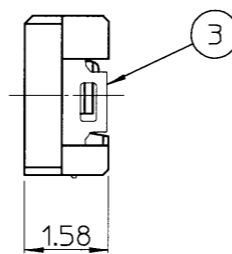


P39909

ON



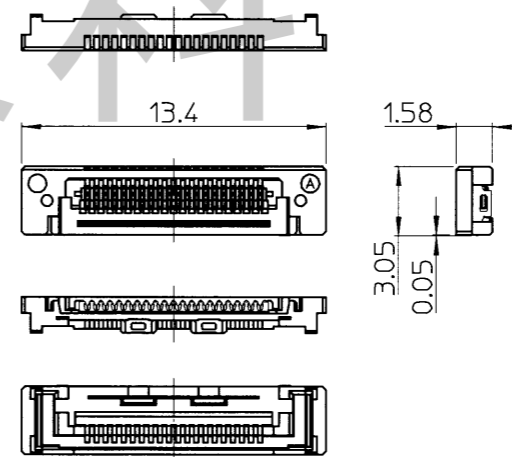
X-X' mated cross section(20:1)
USLS00-20-X/USLS20-20



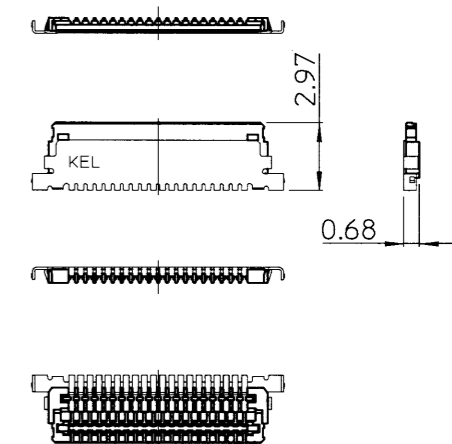
NOTES

- 1) Unless otherwise specified, tolerance shall be:
指定無き寸法公差
Less than 10 ±0.15
10 or more ±0.20
0~10未満 ±0.15
10以上 ±0.20
- 2) Contact finish. コンタクトの仕上
Under plating Nickel
Gold plating thickness(Au 0.05µm or more)
ニッケルめっき下地
金めっき仕上 0.05µm以上
- 3) Metal shell 1 finish. 金属シェル1の仕上
Under plating Nickel
Gold plating thickness(Au 0.05µm or more)
ニッケルめっき下地
金めっき仕上 0.05µm以上
- 4) Metal shell 2 finish. 金属シェル2の仕上
Under plating Nickel
Tin copper plating
ニッケルめっき下地
錫銅めっき仕上
- 5) Part Number
USLS 20 - 20
Number of contacts
20 : 20 pins
Variation
20 : Plug for IDC cable connection
Series number
USL stack series AWG42 Micro coaxial cable connector
- 6) Product family 製品構成
USLS20-30
USLS20-20Base
USLS20-20CV
- 7) Preliminary drawing.
Specification may be changed without prior notice.
形状、仕様を変更する場合がございます。
治具等を製作する場合には弊社営業へ確認をお願い致します。

参考資料



USLS20-20Base(3:1)



USLS20-20CV(3:1)

⑤	USLS20-20CV	IDC cover 圧接カバー	1	Glass-filled L.C.P.(UL94V-0)Black L.C.P.(UL94V-0)黒 ガラス繊維入り	
④		Metal shell 2 金属シェル2	1	Copper alloy 銅合金	SEE NOTE4
③	USLS20-20 Base	Metal shell 1 金属シェル1	1	Copper alloy 銅合金	SEE NOTE3
②		Contact コンタクト	20	Copper alloy 銅合金	SEE NOTE2
①		Insulator インシュレータ	1	Glass-filled L.C.P.(UL94V-0)Black L.C.P.(UL94V-0)黒 ガラス繊維入り	
No.	Part Number 製品名	Component 名称	Quantity 数量	Material 材質	Finish 仕上

△ x					
△ x					
△ x					
△ x 1	Jun. 2,2016	N. Suwita	K. Tagai	P. Yamashita	Added pin No.(ピン番号追加)
REV. DATE	APPROVED BY	CHECKED BY	DRAWN BY		
THIRD ANGLE PROJECTION	DRAWN BY T.Omachi	DATE July.22,2005	CHECKED BY K.Tagai	DATE July.22,2005	APPROVED BY A.Shimada
MATERIAL		TITLE		DESCRIPTION	
FINISH		USLS20-20 USLS20-20CV USLS20-20 Base		KEL CORPORATION	
DRAWING No.				REVISION	
P39909				1	