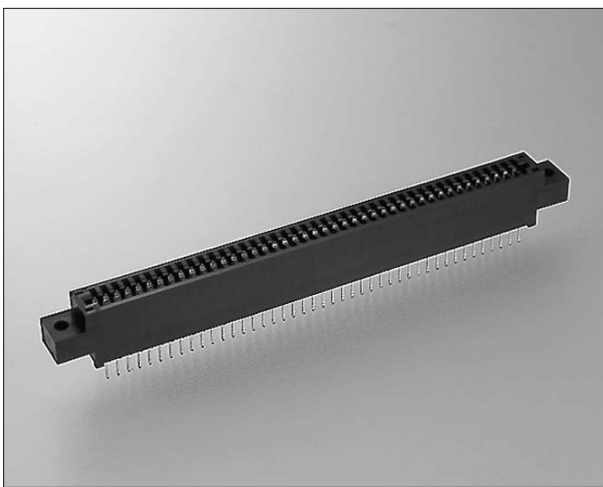


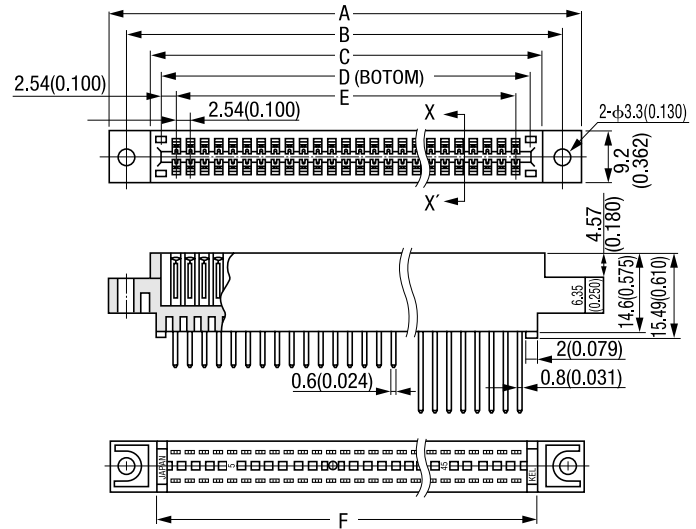
Unit:mm(inch)



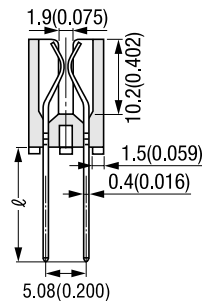
ORDER CODE

4640 - [] - [] - **F**

- Series name
- No. of contacts
 - 044 : 44pin
 - 048 : 48pin
 - 056 : 56pin
 - 060 : 60pin
 - 062 : 62pin
 - 072 : 72pin
 - 086 : 86pin
 - 088 : 88pin
 - 100 : 100pin
- F : RoHS Compliance
- Terminal Style
 - 041 : Dip solder
 - 141 : Wire wrap

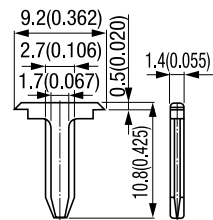


X-X' Cross Section



Positioning Post

Material : Glass-Filled P.B.T.



※ ℓ : #041.....6.2(0.244)
#141.....14.5(0.571)

FEATURES

- 2.54mm contact centers
- Dual Leads
- Bifurcated canti-lever contact
- Accepts 1.6mm thick board
- RoHS compliance

SPECIFICATIONS

- Current Rating : 3A per contact
- Contact Resistance : 16mΩ max.
- Dielectric Withstanding Voltage : 800V AC for 1 minute
- Insulation Resistance : 5,000MΩ min. at 500V DC
- Insertion Force : 412g max./pair
- Withdrawal Force : 32g min./pair

MATERIAL

- Insulator : Glass-Filled P.B.T. (UL94V-0)
- Contact : Copper Alloy,
- Plating : Gold over Nickel(Contact area)
Tin copper over Nickel(Terminal area)

Packaging style
Other

Product Table / Dimensions

No. of contacts	Part Number	A	B	C	D	E	F	Number of packaging
44	4640-044-041-F	77.09	70.49	62.48	58.42	53.34	59.69	150
	4640-044-141-F	(3.035)	(2.775)	(2.460)	(2.300)	(2.108)	(2.350)	100
48	4640-048-041-F	82.17	75.57	67.56	63.50	58.42	64.77	130
	4640-048-141-F	(3.235)	(2.975)	(2.660)	(2.500)	(2.300)	(2.550)	85
56	4640-056-041-F	92.33	85.73	77.72	73.66	68.58	74.93	120
	4640-056-141-F	(3.635)	(3.375)	(3.060)	(2.900)	(2.700)	(2.950)	80
60	4640-060-041-F	97.41	90.81	82.80	78.74	73.66	80.01	110
	4640-060-141-F	(3.835)	(3.575)	(3.260)	(3.100)	(2.900)	(3.150)	78
62	4640-062-041-F	99.95	93.35	85.34	81.28	76.20	82.55	110
	4640-062-141-F	(3.935)	(3.675)	(3.360)	(3.200)	(3.000)	(3.250)	75
72	4640-072-041-F	112.65	106.05	98.04	93.98	88.90	95.25	100
	4640-072-141-F	(4.435)	(4.175)	(3.860)	(3.700)	(3.500)	(3.750)	70
86	4640-086-041-F	130.43	123.83	115.82	111.76	106.68	113.03	85
	4640-086-141-F	(5.135)	(4.875)	(4.560)	(4.400)	(4.200)	(4.450)	55
88	4640-088-041-F	132.97	126.37	118.36	114.30	109.22	115.57	85
	4640-088-141-F	(5.235)	(4.975)	(4.660)	(4.500)	(4.300)	(4.550)	50
100	4640-100-041-F	148.21	141.61	133.60	129.54	124.46	130.81	75
	4640-100-141-F	(5.835)	(5.575)	(5.260)	(5.100)	(4.900)	(5.150)	50